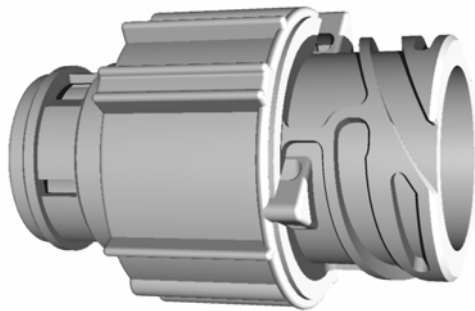


Inline Connector



Connector with wire shield adapter

Heavy Duty Connectors

Robust and compact connector housing system completing the heavy duty *MKR* and *VKR* terminal system. The connectors are designed for engine mount applications, withstanding extreme temperature ranges and resistant to high pressure water impact, vehicle fluids and extreme vibration conditions.

Product Features

- Available for 1.5mm (*MKR*) and 2.5mm (*VKR*) round pin terminal system
- Secondary terminal lock for position assurance and improved retention
- Bayonet nut to ensure low mating effort, tight fit and system robustness
- Design accepts wire shield and strain relief
- Different polarisations available

Customer Advantages

- Connection system for use in extreme environments, e.g. engine mount applications, truck applications, etc.
- High terminal density for minimum connector package
- Easy to handle with bayonet nut
- Tactile feedback on reaching full mating condition

Status: In Production

For further information contact:
Lear Corporation, Terminals & Connectors Business Unit
Schlosserstr. 4, 42899 Remscheid, GERMANY
Phone: +49 2191 46430-0